



**CP**

*Department of Computer Engineering*

---

# Introduction to Network Equipment

Krerik Piromsopa.

Department of Computer Engineering.

Chulalongkorn University.

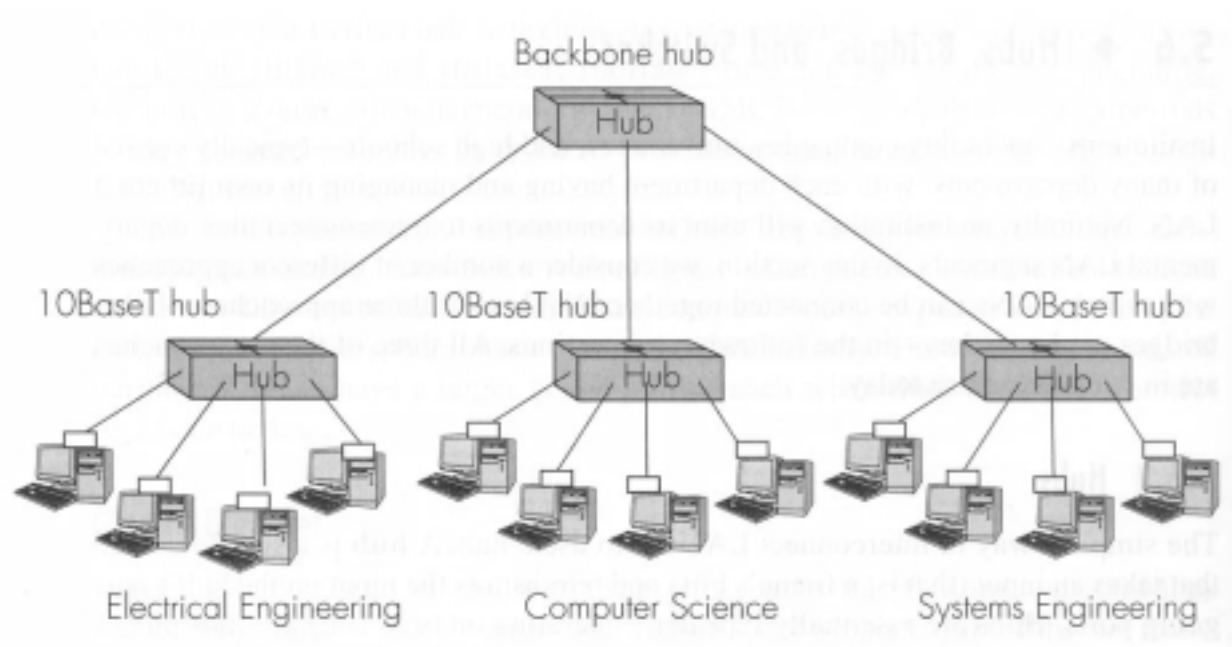


**CP**

Department of Computer Engineering

# Hub

---



Krerk Piromsopa.

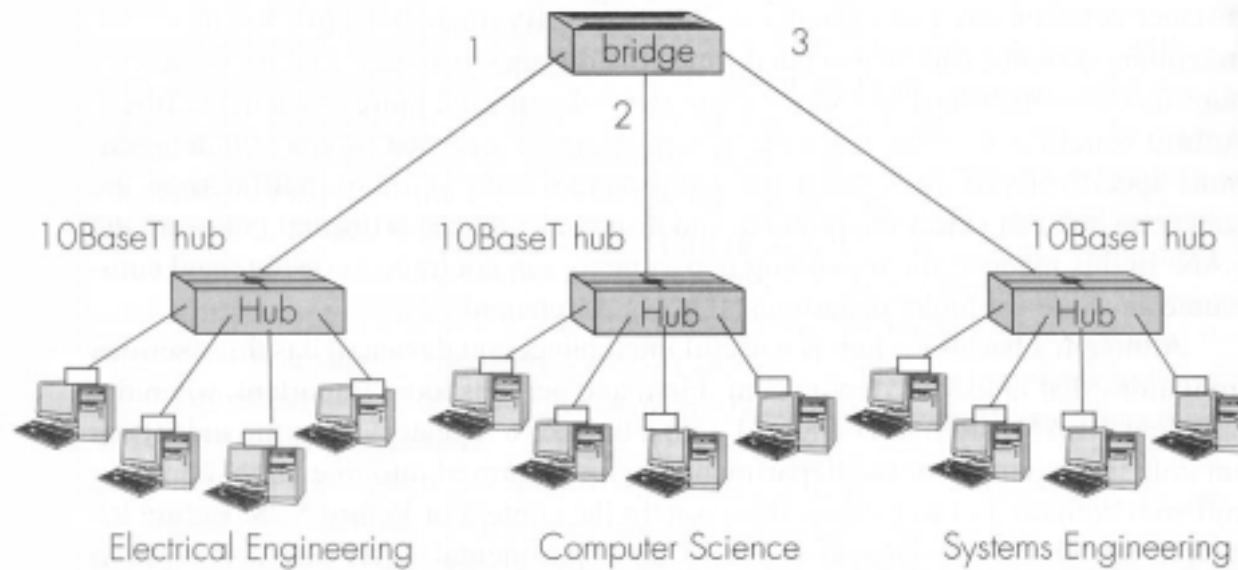


**CP**

Department of Computer Engineering

# Bridge

---



Krerk Piromsopa.

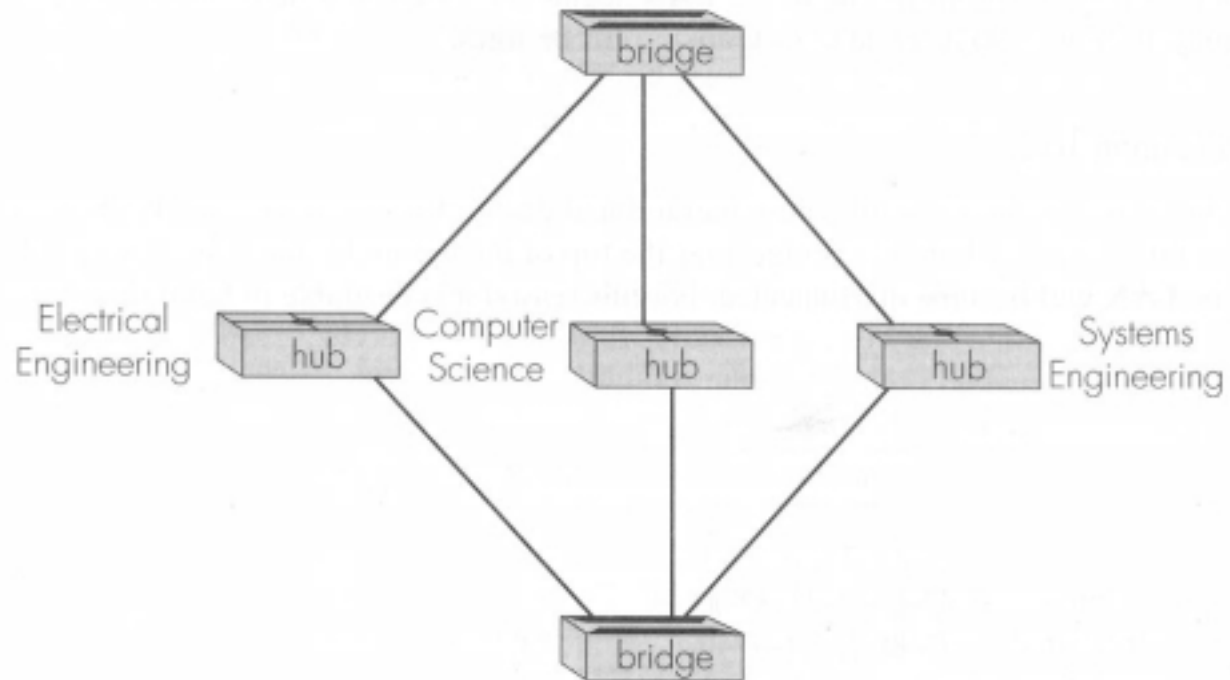


**CP**

Department of Computer Engineering

# Redundant Bridge

---



Krerk Piromsopa.

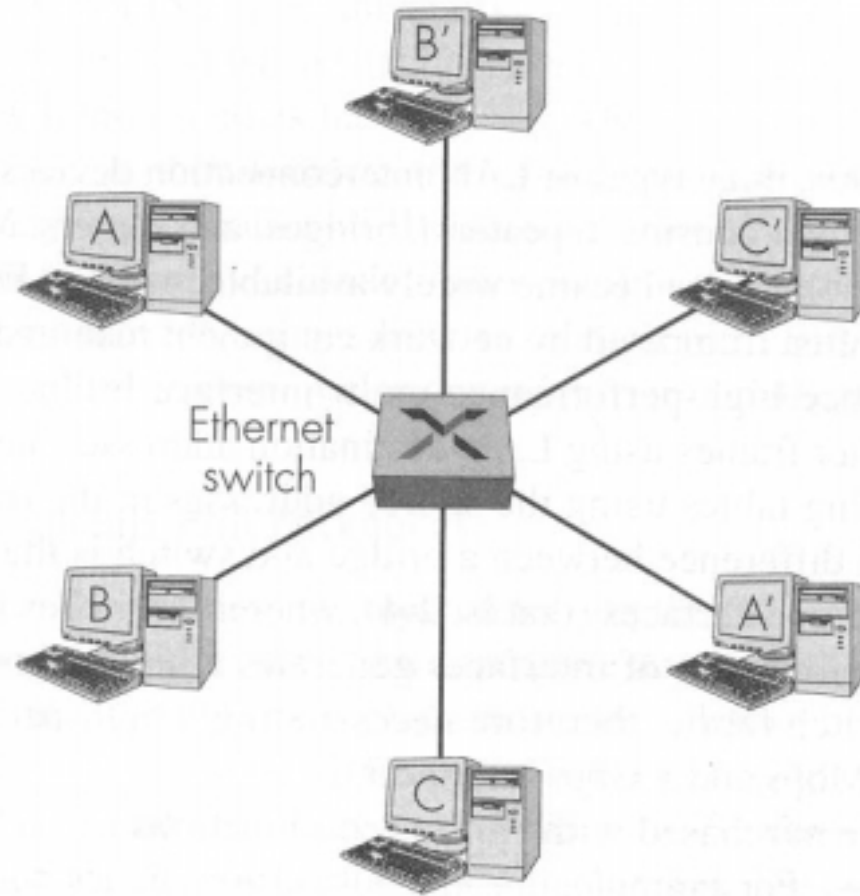


**CP**

Department of Computer Engineering

# Switch

---



Krerk Piromsopa.

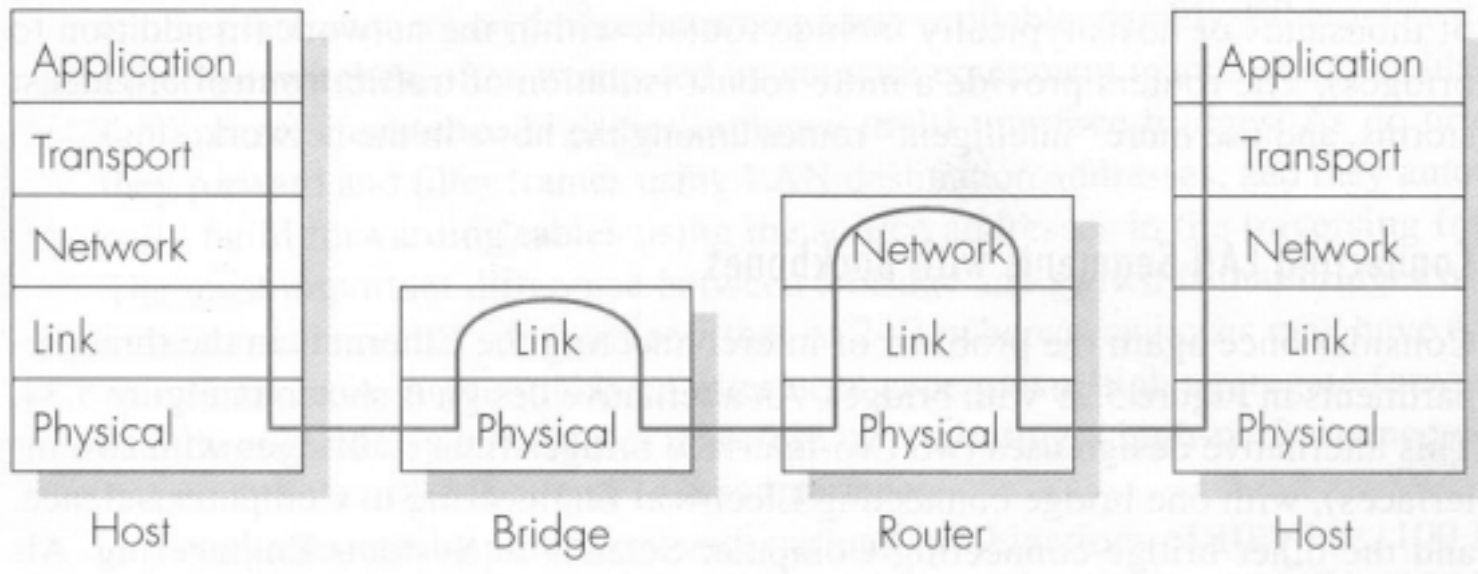


**CP**

Department of Computer Engineering

# Router vs Bridge

---



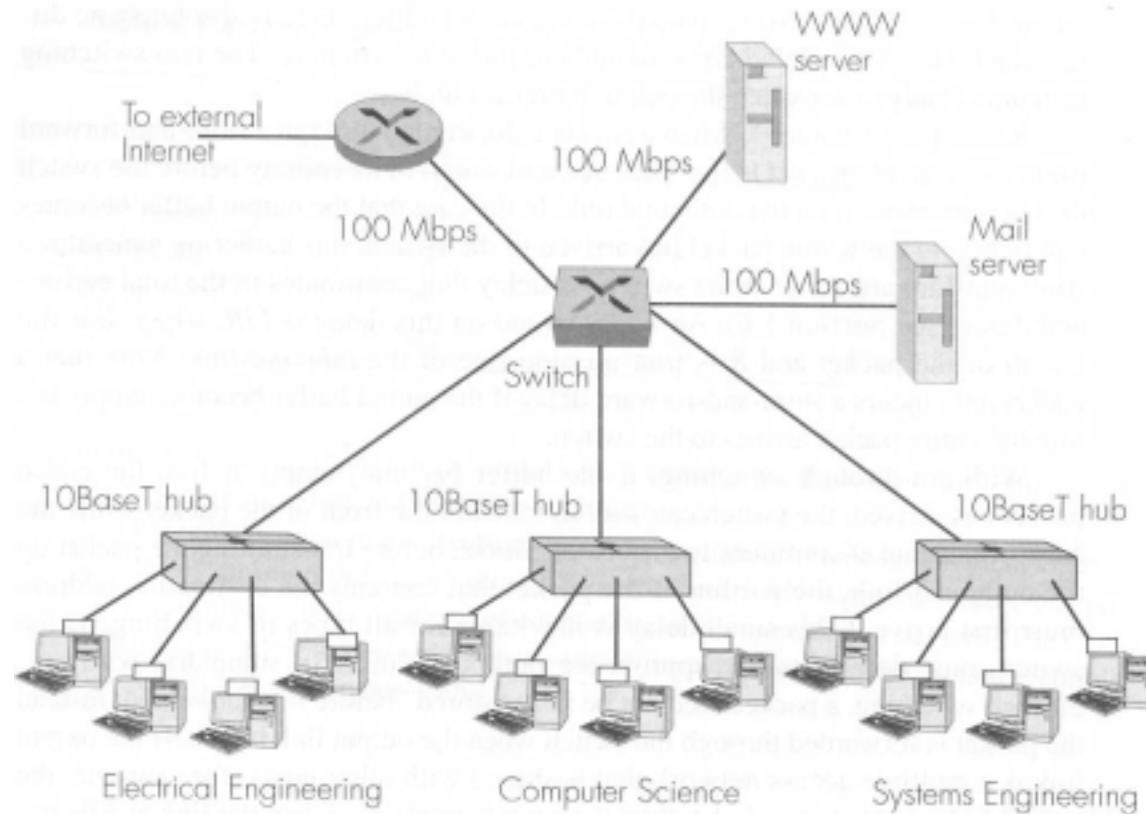
Krerk Piromsopa.



**CP**

Department of Computer Engineering

# Complex Network



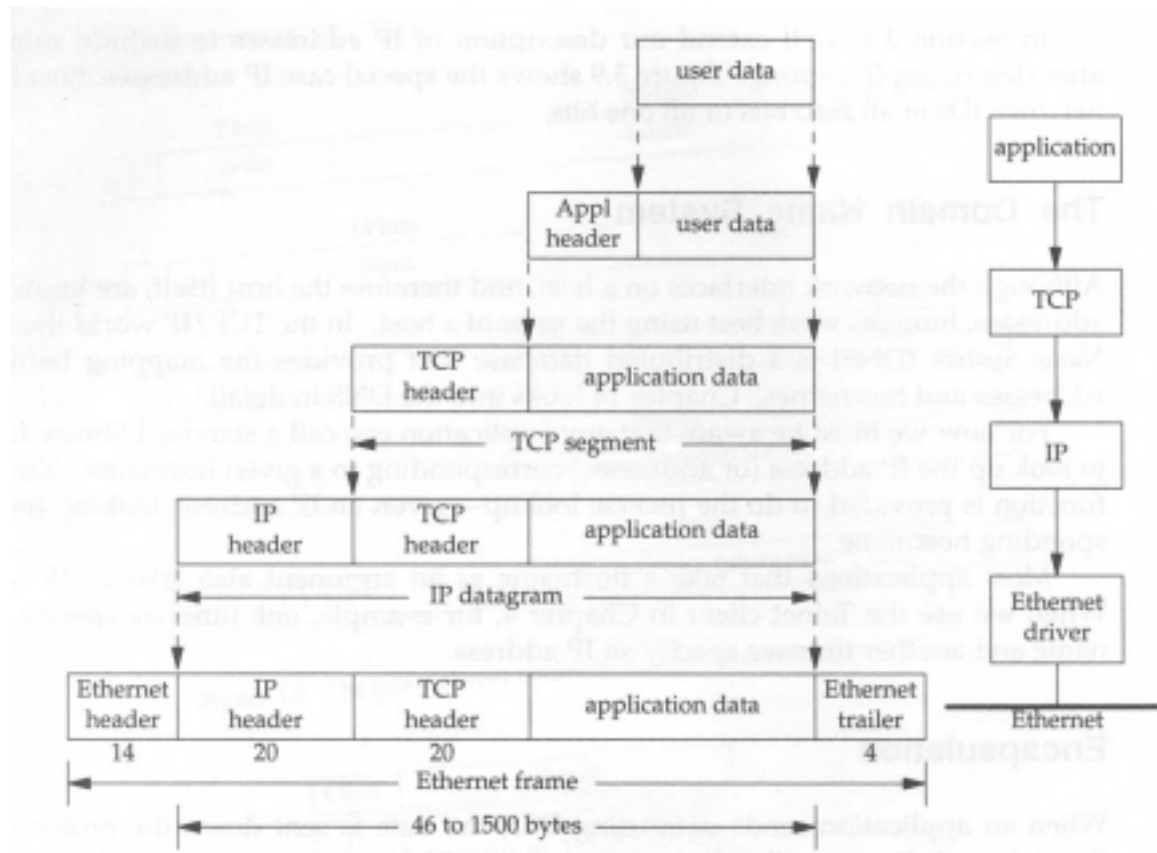
Krerk Piromsopa.



**CP**

Department of Computer Engineering

# Protocol STACK



Krerk Piromsopa.





**CP**

Department of Computer Engineering

# TCP HEADER

---

- Source Port #
- Destination Port #
- Seq/Ack number
- Flag  
[SYN/ACK/PSH/RST/FIN/..]
- Checksum
- other.
- Port # varies from 1-65535.
- Port # performs multiplexing and demultiplexing jobs.
- Each Application binding to particular port.
- Well known service port.  
(80,21,23)



**CP**

*Department of Computer Engineering*

# Socket

---

Krerk Piromsopa.

Network Equipment, TCP/IP

10

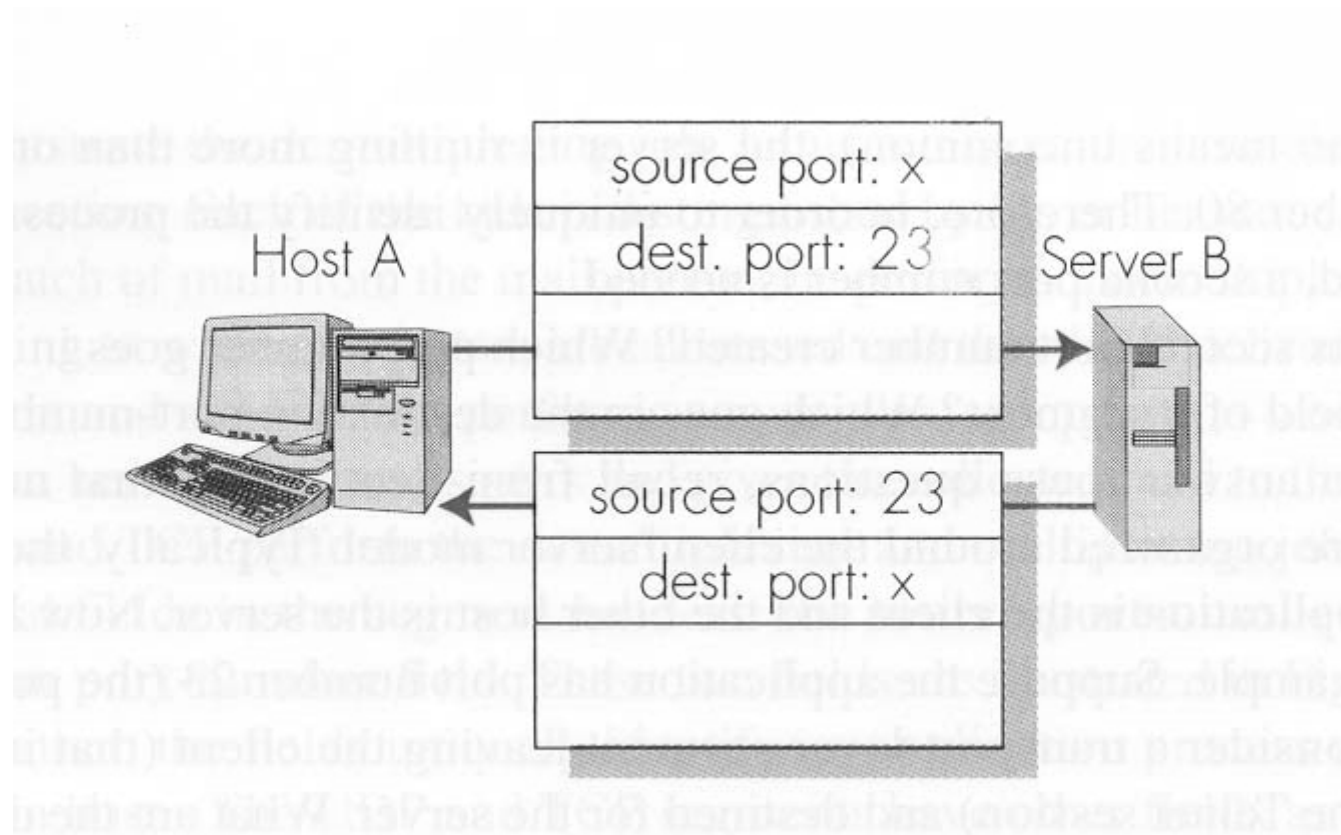


**CP**

Department of Computer Engineering

# Client / Server Connection

---



# Server Connection

---

